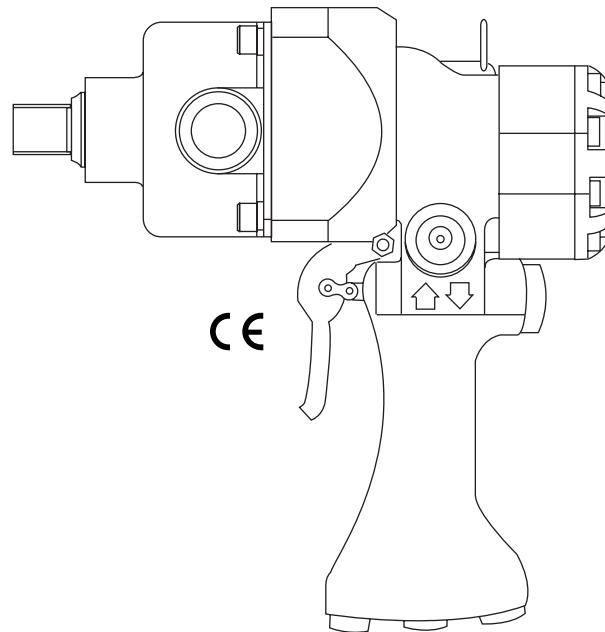


SPECIFICATIONS AND PARTS

Fairmont[®]



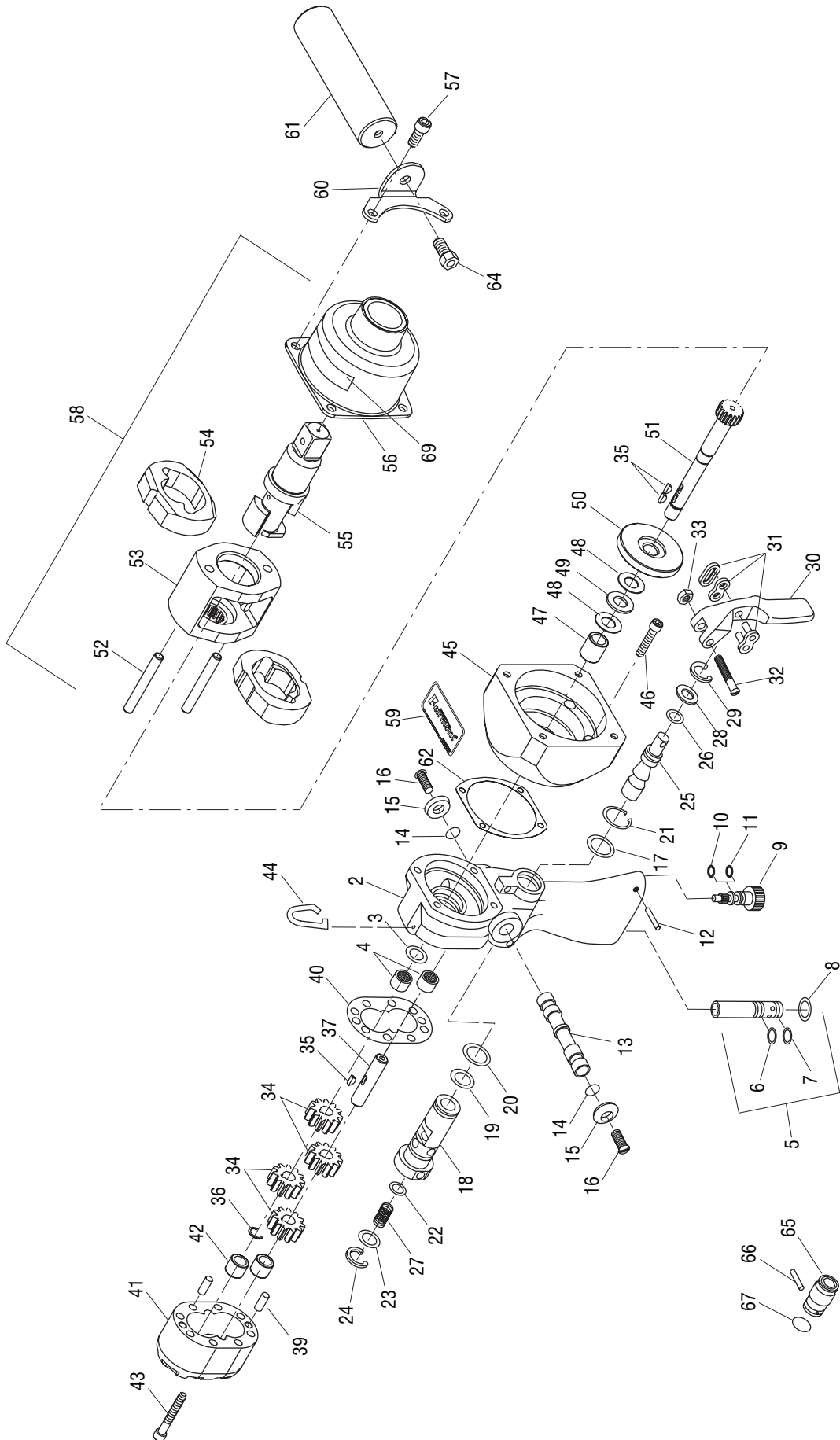
H6510A and H6510A2 Impact Wrenches

Serial Codes GBM and GBN



Read and understand all of the instructions and safety information in this manual before operating or servicing this tool.

Illustration



Parts List

Key	UPC No. 78-3310-	Part No.	Description	Qty	Key	UPC No. 78-3310-	Part No.	Description	Qty
2	49950	49950	HANDLE ASSEMBLY with ORIFICE and BEARINGS	1	36	41621	F017010	Retaining ring, 25/64 external	1
3*	41503	F015305	O-ring, 1/2 x 3/32-90	1	37	45696	50456962	Shaft, idler	1
4	41591	F016728	Needle bearing	2	39	41624	F017014	Dowel pin, 1/4 x 5/8	2
5	43302	138338	FLOW CONTROL CARTRIDGE	1	40*	41595	F016732	Gasket	1
6*	41491	F015261	O-ring, 1/2 x 1/16-70	1	41	40818	133424	MOTOR CAP ASSEMBLY	1
7*	41627	F017078	O-ring, 7/16 x 1/16-70	1	42	41591	F016728	Needle bearing	2
8	41600	F016737	Retaining ring, 11/16 internal	1	43	41387	F012367	Socket head cap screw, 1/4-20 x 1-3/4	8
9	41094	138311	Screw, adjustable torque output	1	44	43817	F023463	Hook, lift	1
10*	42729	L080005	O-ring, 1/4 x 1/16-70	1	45	49948	49948	Adapter	1
11*	41843	F021471	Back-up ring	1	46	41889	F021674	Socket head cap screw, 1/4-20 x 1-1/4	4
12*	42053	F023467	Spring pin, 5/64 x 7/8	1	47	49243	49243	Bearing, needle	1
13	40215	105427	Spool, directional	1	48	48319	48319	Washer, thrust	2
14*	41489	F015257	O-ring, 7/16 x 1/16-68	2	49	48318	48318	Bearing, thrust	1
15	40228	106576	Button	2	50	49951	49951	Spacer	1
16	41715	F018627	Flat socket head cap screw, #10 x 1/2	2	51	49949	49949	Driveshaft	1
17*	41559	F015679	O-ring, 7/8 x 1/16-70	1	52	49957	49957	Pin	2
18	41097	138315	Sleeve	1	53			Frame, hammer	1
19*	42089	F024419	O-ring, .787 x .051-70	1	54			Hammer	2
20*	41534	F015403	O-ring, 3/4 x 1/16-90	1	55			Anvil	1
21	41298	F009117	Retaining ring, 7/8 external	1	56			Case, hammer	1
22*	41371	F011762	O-ring, 7/16 x 3/32-90	1	57	50222	50222	Socket head cap screw, 5/16-18 x 3/4	4
23	41095	138312	Cap	1	58	49952	49952	Mechanism, 3/4 impact	1
24	41712	F018511	Retaining ring, 3/4 internal	1	59	41547	F015482K1	Decal	1
25	48681	48681	Spool, control	1	60	49964	49964	Bracket, handle mtg.	1
26*	41585	F016327	O-ring, 5/16 x 1/16-70	1	61	49965	49965	Handle	1
27	42865	L089019	Spring, compression	1	62*	40134	101524	Gasket	1
28	41096	138313	Washer	1	64	50529	90505298	Hex head cap screw, 3/8-16 x 3/4	1
29	41297	F008797	Retaining ring, 5/8 internal	1	65	41964	F022551	Quick-change chuck, 5/8 hex (H6510A2 only)	1
30	40406	118061	Trigger	1	66	41625	F017039	Pin, .199 x 1.25 (H6510A2 only)	1
31	41636	F017345	Connecting link	1	67	41317	F009868	O-ring, 1-1/4 x 1/8-70 (H6510A2 only)	1
32	41583	F016230	Slotted round head machine screw, #10 x 1-1/4	1	69	46356	50463560	Decal, warning	1
33	41676	F018029K	Hex elastic stop nut, #10	1	*	49963	49963	Seal kit (includes items marked with an asterisk)	
34	41630	F017105	Gear	4					
35	41592	F016729	Key, 1/8 x 3/8	3					

KEEP THIS MANUAL

Purpose of this Manual

This manual is intended to familiarize all personnel with the specifications and parts for the following Fairmont tools:

H6510A (42268) Serial Code GBM

H6510A2 (42270) Serial Code GBN

Keep this manual available to all personnel.

Replacement manuals are available upon request at no charge.

Other Publications

Tool Owners/Users

Operation Manual: Publication 99930269

SAE Standard J1273 (Hose and Hose Assemblies): Publication 99930323

Authorized Fairmont Service Centers

Service Manual: Publication 99940132

Specifications

H6510A and H6510A2

Type of Hydraulic System Open-Center or Closed-Center

Hydraulic Ports

Pressure 3/4–16 SAE O-Ring Boss

Tank 3/4–16 SAE O-Ring Boss

Output @ 22.7 l/min (6 gpm)

RPM (No Load) 2700

Torque 1900 Nm (1400 ft-lb)

Drive Size

H6510A 3/4" Square Drive

H6510A2 5/8" Quick-Change Chuck

Sound Power Level 85 L_{WA}

Mass/Weight 6.4 kg (14.1 lb)

Length 267 cm (10.5")

Width 95 mm (3.75")

Height 248 mm (9.75")

Hydraulic Power Source

▲WARNING

Do not exceed the following hydraulic power source maximums:

- Hydraulic flow: 45.4 l/min (12 gpm)
- Pressure relief: 138 bar (2000 psi)
- Back pressure: 13.8 bar (200 psi)

Failure to observe this warning could result in severe injury or death.

Type of Hydraulic System Open-Center or Closed-Center
Flow

Minimum 15.1 l/min (4 gpm)

Recommended 22.7 l/min (6 gpm)

Maximum 45.4 l/min (12 gpm)

Filtration 10 Micron (Nominal)

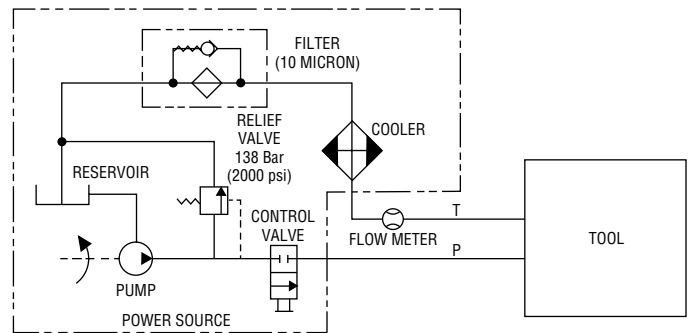
Pressure Relief Setting 138 bar (2000 psi)

Back Pressure (maximum*) 13.8 bar (200 psi)

* 13.8 bar (200 psi) is the maximum agreed standard back pressure for the HTMA (Hydraulic Tool Manufacturers Association). Fairmont tool will operate satisfactorily at this standard.

1. Maximum hydraulic fluid temperature must not exceed 60 °C (140 °F). A sufficient oil cooling capacity is needed to limit the hydraulic fluid temperature.
2. Hydraulic flow must not exceed 45.4 l/min (12 gpm). Install a flow meter in the return line to measure the rate of hydraulic flow before using the tool.
3. Pressure relief valve setting must not exceed 138 bar (2000 psi) at your tool's maximum flow. Locate the pressure relief valve in the supply circuit to limit excessive hydraulic pressure to the tool.

Hydraulic Schematic



Recommended Hydraulic Fluids

Use any non-detergent, petroleum-based hydraulic fluid which meets the following specifications or HTMA specifications.

S.U.S. @:

38 °C (100 °F) 140 to 225

99 °C (210 °F) 40 minimum

Flash Point 170 °C (340 °F) minimum

Pour Point -34 °C (-30 °F) minimum



USA 800-435-0786 Fax: 800-451-2632

815-397-7070 Fax: 815-397-1865

Canada 800-435-0786 Fax: 800-524-2853

International +1-815-397-7070 Fax: +1-815-397-9247

4455 Boeing Drive • Rockford, IL 61109-2988 • USA • 815-397-7070
An ISO 9001 Company • Greenlee Textron is a subsidiary of Textron Inc.

www.greenlee.com

Printed in USA