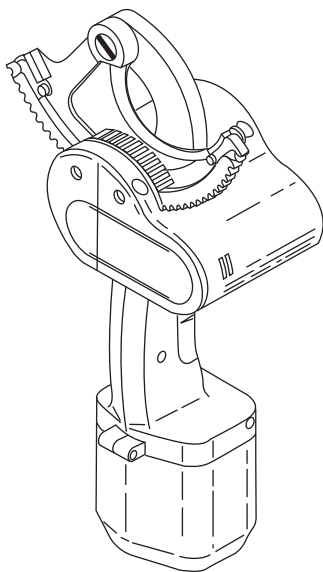


INSTRUCTION MANUAL



GREENLEE®

A Textron Company



ES750

Battery-powered Cable Cutter

45380 — with 120 V Charger

45381 — with 220 V Charger



Read and understand all of the instructions and safety information in this manual before operating or servicing this tool.

Register this product at www.greenlee.com



Table of Contents

| | |
|---|-------|
| Description, Safety, and Purpose of this Manual | 2 |
| Important Safety Information..... | 3-7 |
| Specifications | 8 |
| Operation..... | 9 |
| Charger..... | 10 |
| Troubleshooting..... | 11 |
| Maintenance..... | 12 |
| Illustration | 13 |
| Parts List | 14-15 |

Description

The Greenlee Battery-powered Cable Cutter is intended to cut up to 750 kcmil copper and aluminum cable. The cable cutter is driven by a 12-volt motor and is powered by a rechargeable NiCd (nickel cadmium) battery. The motor is protected by a circuit breaker.

Safety

Safety is essential in the use and maintenance of Greenlee tools and equipment. This manual and any markings on the tool provide information for avoiding hazards and unsafe practices related to the use of this tool. Observe all of the safety information provided.

Purpose of this Manual

This manual is intended to familiarize all personnel with the safe operation and maintenance procedures for the Greenlee ES750 Battery-powered Cable Cutter.

Keep this manual available to all personnel.

Replacement manuals are available upon request at no charge at www.greenlee.com.



Do not discard this product or throw away!
For recycling information, go to www.greenlee.com.

All specifications are nominal and may change as design improvements occur. Greenlee Textron Inc. shall not be liable for damages resulting from misapplication or misuse of its products.

KEEP THIS MANUAL

IMPORTANT SAFETY INFORMATION



SAFETY ALERT SYMBOL

This symbol is used to call your attention to hazards or unsafe practices which could result in an injury or property damage. The signal word, defined below, indicates the severity of the hazard. The message after the signal word provides information for preventing or avoiding the hazard.

⚠ DANGER

Immediate hazards which, if not avoided, **WILL** result in severe injury or death.

⚠ WARNING

Hazards which, if not avoided, **COULD** result in severe injury or death.

⚠ CAUTION

Hazards or unsafe practices which, if not avoided, **MAY** result in injury or property damage.



⚠ WARNING

Read and understand all of the instructions and safety information in this manual before operating or servicing this tool.

Failure to observe this warning could result in severe injury or death.

IMPORTANT SAFETY INFORMATION

Cable Cutter



⚠ WARNING

Electric shock hazard:

This tool is not insulated. When using this unit near energized electrical lines, use proper personal protective equipment.

Failure to observe this warning could result in severe injury or death.



⚠ WARNING

Wear eye protection when operating or servicing this tool.

Failure to wear eye protection could result in serious eye injury from flying debris.



⚠ WARNING

- Keep hands away from blade.
- Remove the battery before inspecting or servicing the tool.

Failure to observe these warnings could result in severe injury or death.

⚠ CAUTION

- Use this tool for manufacturer's intended use only. Use other than that which is described in this manual can result in injury or property damage.
- Do not cut steel or ACSR.
- Inspect the tool before each use. Replace any worn, damaged, or missing items with Greenlee replacement parts. A damaged or improperly assembled tool can break and strike nearby personnel.

Failure to observe these precautions may result in injury or property damage.

IMPORTANT SAFETY INFORMATION

Battery

▲WARNING

Do not dispose of battery in a fire. The battery will vent harmful vapors and can explode.

Failure to observe this warning could result in severe injury or death.

▲CAUTION

Do not allow any object to contact the battery terminals.

- Do not immerse batteries in liquid. Liquid may create a short circuit and damage the battery.
- Do not place the battery into a pocket, tool pouch, or tool box with conductive objects. Conductive objects may create a short circuit and damage the battery.
- Do not place a battery on moist ground or grass. Moisture may create a short circuit and damage the battery.

Failure to observe these precautions may result in injury or property damage.

▲CAUTION

- Do not charge the battery if it is cooler than 50 °F (10 °C) or warmer than 95 °F (35 °C). Damage to the battery can result.
- Do not store the battery at more than 140 °F (60 °C). Damage to the battery can result.
- Do not use another manufacturer's charger. Other manufacturers' chargers may overcharge and damage the battery.

Failure to observe these precautions may result in injury or property damage.

▲CAUTION

- Do not expose the battery to liquids such as water, oil, or solvents. Liquids will damage the battery.
- Do not attempt to open the battery. It contains no user-serviceable parts.
- Use this battery for manufacturer's intended use only. Use other than that which is described in this manual can result in injury or property damage.
- Inspect the battery before each use. Do not use a damaged battery.

Failure to observe these precautions may result in injury or property damage.

IMPORTANT SAFETY INFORMATION

Charger



⚠ WARNING

Electric shock hazard:

- Use indoors only.
- Do not expose the charger to rain, snow, or wet conditions.
- Unplug the charger from the power source before cleaning the charger.

Failure to observe these warnings could result in severe injury or death.

⚠ WARNING

Greenlee recommends plugging the charger directly into a receptacle. If an extension cord must be used:

- Select an extension cord with a configuration that exactly matches that of the charger's plug.
- Inspect the extension cord for wear or damage.

Use of an improper or damaged extension cord could result in electric shock or fire.

⚠ WARNING

- Do not obstruct the ventilation slots. This device generates heat while charging. Excessive internal heat can result in a fire.
- Do not use or store the charger near a heat source. This device generates heat while charging. Excessive internal heat can result in a fire.

Failure to observe these warnings could result in severe injury or death.

IMPORTANT SAFETY INFORMATION

Charger (cont'd)

⚠ WARNING

Use this charger to charge the supplied 12-volt rechargeable NiCd (nickel cadmium) batteries only. Other batteries may burst if charged with this charger.

Failure to observe this warning could result in severe injury or death.

⚠ CAUTION

Do not place anything other than the supplied 12-volt rechargeable NiCd (nickel cadmium) battery into the battery pocket.

- Keep dirt and foreign objects out of the battery pocket.
- Do not create a short circuit across the contacts in the battery pocket.

Failure to observe this precaution may result in injury or property damage.

⚠ CAUTION

- Do not connect the charger to a generator. Voltage fluctuations can damage the charger.
- Inspect the charger before each use. Replace the unit if either the charger or cord show signs of damage or wear.
- Do not attempt to repair the charger. It contains no user-serviceable parts.
- Use this tool for manufacturer's intended use only. Use other than that which is described in this manual can result in injury or property damage.

Failure to observe these precautions may result in injury or property damage.



Specifications

Cutter

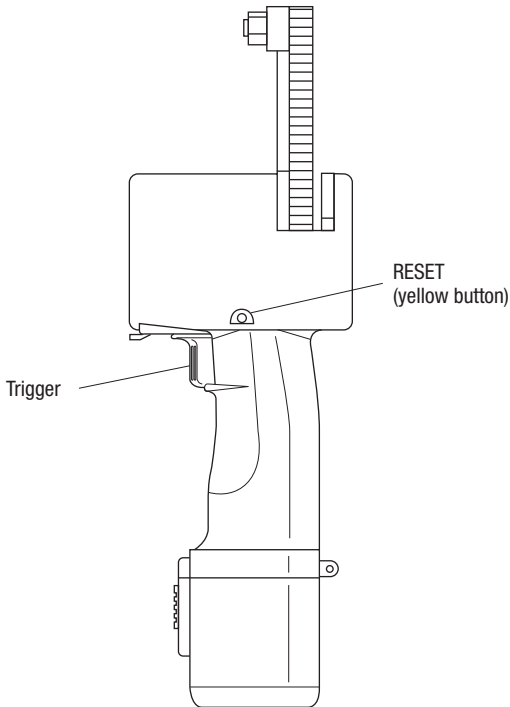
| | |
|--|--------------------|
| Weight (with battery)..... | 5 lb, 8 oz |
| Weight (with battery, charger, and case) | 9 lb, 10 oz |
| Height..... | 13-5/8" |
| Width..... | 6-1/2" |
| Depth..... | 4-1/8" |
| Wire Type..... | Copper or aluminum |
| Maximum Wire Size..... | 750 kcmil |
| Motor..... | 12 VDC |

Battery

| | |
|--------------|-----------------------------|
| Type..... | Rechargeable nickel-cadmium |
| Voltage..... | 12 V |

Charger

| | |
|--------------|--------------------|
| Voltage..... | 120 VAC or 220 VAC |
|--------------|--------------------|



Operation

1. Slide the direction control lever to select either FORWARD or REVERSE. Press the switch to activate the cable cutter. Release the switch after the movable blade is disengaged from the driver.
2. Place the cable to be cut against the stationary blade until it is engaged by the driver. Close the movable blade around the cable.
3. Slide the direction control lever to FORWARD. Press the switch. After the cable is completely cut, release the switch.
4. Slide the direction control lever to the center (LOCK) position.

Circuit Breaker

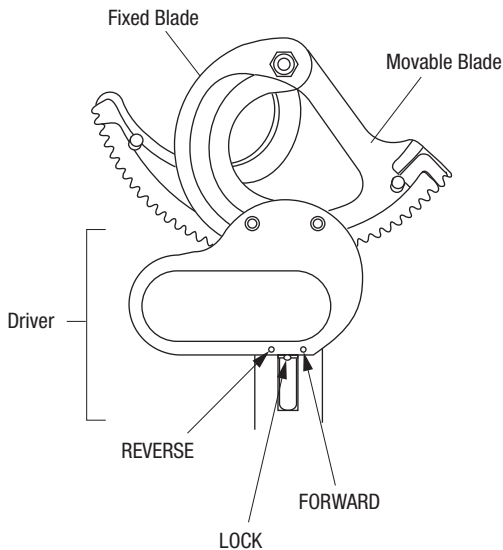
The following may cause the circuit breaker to trip:

- Cutting material that is too large
- Cutting material that is too hard
- Overheating due to continuous use
- Drawing excessive current

If the circuit breaker trips, the tool will stop. If necessary, allow the tool to cool down. Press the RESET button. (Wait 10 seconds to 1 minute before resetting.)

CAUTION

Do not cut steel or ACSR.





Charger

The battery charger will recharge the battery in approximately one hour.

| |
|------------------|
| ▲ CAUTION |
|------------------|

| |
|---|
| Do not connect the charger to a generator. Voltage fluctuations may damage the charger. |
|---|

1. Set the charger on a firm level surface out of direct sunlight. Be sure that the charger's ventilation slots are not blocked.
2. Connect the charger to an appropriate power supply.
3. Insert the battery into the battery pocket of the charger. The LED will light to indicate that the battery is charging. After approximately one hour, the LED will turn off to indicate that the battery is fully charged.
4. Remove the battery from the charger.

Note: Allow the charger to cool for at least 15 minutes before charging another battery.

Troubleshooting

| Problem | Probable Cause | Probable Remedy |
|-----------------------------------|---|---|
| Cutter does not operate. | Battery is discharged. | Charge the battery. |
| | The internal circuit breaker has tripped. | Reset the circuit breaker. |
| | Movable blade is not completely engaged. | Push movable blade until it is completely engaged with the drive. |
| | Control lever in LOCK position. | Move to FORWARD or REVERSE position. |
| Charging LED does not illuminate. | The battery contacts are dirty. | Clean the battery contacts on the battery and in the battery charger. |
| | The battery cartridge is too warm. | Allow battery to cool. |
| Battery life has decreased. | The battery will not hold a charge. | Replace the battery. |
| | Blades are dull. | Replace the blades. |



Maintenance

Replacing Blade Brush

1. Remove the two screws (38) and lift out brush (13).
2. Insert new brush (13). Align hole in brush with holes in housing, install screws (38), and tighten.

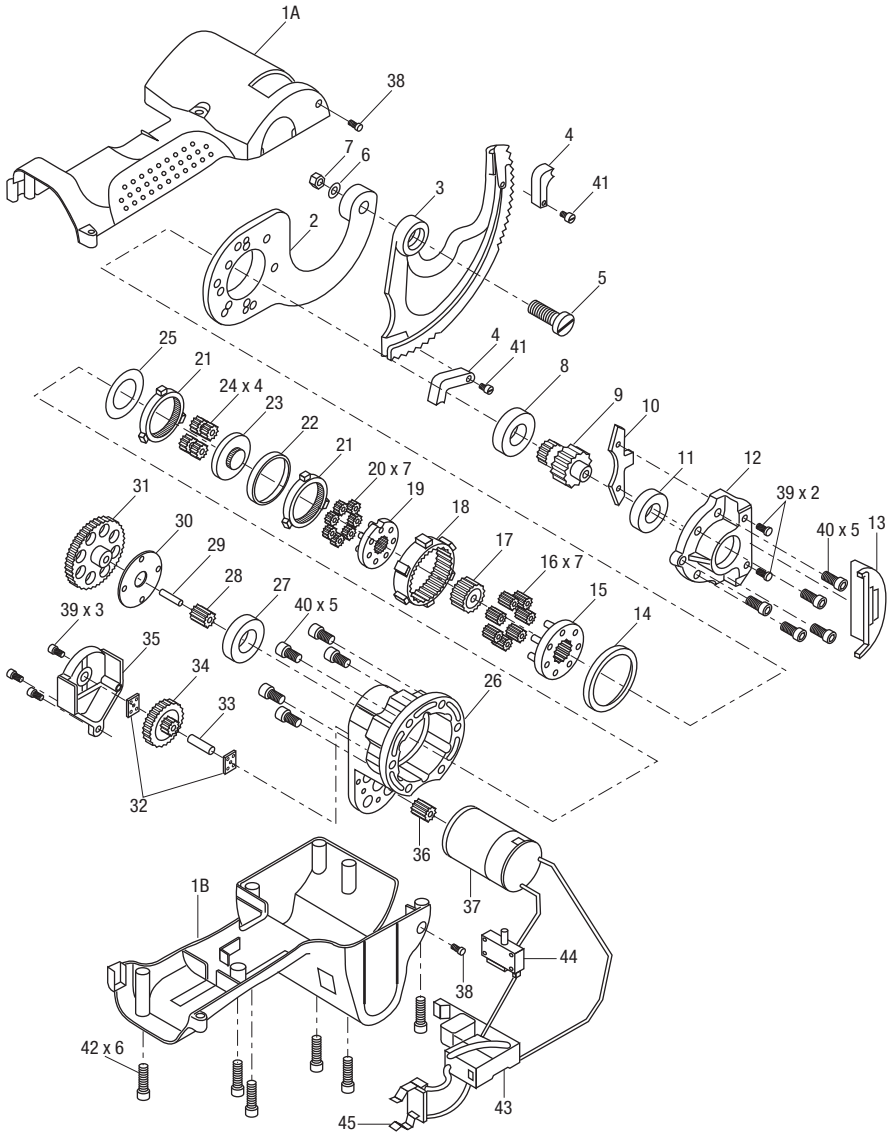
Replacing Movable Blade

1. Rotate blade so that it is clear of pinion gear (9).
2. Secure lock nut (7) with wrench. Remove shoulder screw (5).
3. Install new blade by reassembling shoulder screw (5) and lock nut (7).

Replacing Stationary Blade and Internal Components

1. Remove battery.
2. Remove the two screws (38) holding the brush (13).
3. Remove the screws (42) from the housing (1B). Place the housing (1B) down on bench. Lift off housing (1A).
4. Remove the internal parts from the housing.
5. Remove the screws (40) from the bearing case (12). Remove the bearing case (12), bearing (11), and pinion gear (9).
6. Remove screws (39), gear cover (35), and sprocket, pin and gear plates (34, 33, 32). Remove the stationary (2) and moving blades (3) by removing the screws (40).
7. Remove the two Phillips screws to remove the motor (37) if required.
8. If gear box disassembly is required, use the "Illustration" for directions.
9. Reassemble the cutting blades (2, 3) with screws (40). Reassemble sprocket, pin, and gear plates (32, 33, 34). Attach gear cover (35) with screws (39).
10. Assemble bearing (11) and pinion gear (9). Use screws (40) to reattach the bearing case (12).
11. Install the internal component in the right housing (1B). Carefully place left housing (1A) on top. Make sure circuit breaker button is in its proper location. Also make sure the internal wires are not pinched. Turn unit over and tighten screws (42). Do not overtighten screws. Make sure hanging ring is reattached.
12. Install brush (13) with screws (38). Use pin to align holes before reassembling screws.

Illustration





Parts List

| Key | Part No. | Description | Qty |
|-----|----------|--|-----|
| | 50109910 | Housing Kit (includes items 1A, 1B, 42, and 45B) | |
| 1A | | Left housing..... | 1 |
| 1B | | Right housing | 1 |
| 2 | 50453335 | Stationary blade..... | 1 |
| 3 | 50453343 | Moving blade | 1 |
| 4 | 50453351 | Gear guides set..... | 1 |
| 5 | 50453360 | Shoulder screw M6..... | 1 |
| 6 | 50453378 | Washer M6..... | 1 |
| 7 | 50453386 | Lock nut M6..... | 1 |
| 8 | 50453394 | Bearing..... | 1 |
| 9 | 50453408 | Pinion bearing..... | 1 |
| 10 | 50453416 | Cutter plate | 1 |
| 11 | 50453424 | Bearing..... | 1 |
| 12 | 50453432 | Bearing case | 1 |
| 13 | 50453440 | Brush..... | 1 |
| | 50101358 | Planetary Gear Box (includes items 14–26) | |
| 14 | | Aluminum circlip | 1 |
| 15 | | Gear plate | 1 |
| 16 | | Gear | 7 |
| 17 | | Gear | 1 |
| 18 | | Gear | 1 |
| 19 | | Gear | 1 |
| 20 | | Gear | 7 |
| 21 | | Gear | 2 |
| 22 | | Plastic circle..... | 1 |
| 23 | | Gear plate | 1 |
| 24 | | Gear | 4 |
| 25 | | Washer..... | 1 |
| 26 | | Gear case..... | 1 |
| | 50101366 | Ring Gear Kit (includes items 27–31) | |
| 27 | | Bearing..... | 1 |
| 28 | | Gear | 1 |
| 29 | | Pin..... | 2 |
| 30 | | Gear washer..... | 1 |
| 31 | | Gear | 1 |

Parts List (cont'd)

| Key | Part No. | Description | Qty |
|-----|----------|---|-----|
| 32 | 50453637 | Gear plate | 2 |
| | 50101374 | Transfer Gear (includes items 33 and 34) | |
| 33 | | Gear pin | 1 |
| 34 | | Gear | 1 |
| 35 | 50453661 | Gear cover | 1 |
| | 50101382 | Motor and Gear (includes items 36 and 37) | |
| 36 | | Motor gear | 1 |
| 37 | | Motor | 1 |
| 38 | 50453696 | Screw M3..... | 1 |
| 39 | 50453700 | Screw M3..... | 5 |
| 40 | 50453718 | Screw M5..... | 10 |
| 41 | 50453726 | Screw M3..... | 2 |
| 42 | 50453734 | Screw M3..... | 6 |
| 43 | 50453769 | Switch | 1 |
| 44 | 50453750 | Circuit breaker | 1 |
| 45A | 50453777 | Contact, black..... | 1 |
| 45B | 52058795 | Contact, white..... | 1 |
| 46 | 52021541 | Decal, WEEE recycle symbol..... | 1 |
| | 50453785 | 12 V battery | |
| | 50453793 | 120 V charger | |
| | 50453823 | 220 V charger | |
| | 50122207 | Plastic case | |
| | 52046794 | Decal kit | |



GREENLEE®

A Textron Company

| | | |
|---------------|-----------------|----------------------|
| USA | 800-435-0786 | Fax: 800-451-2632 |
| | 815-397-7070 | Fax: 815-397-1865 |
| Canada | 800-435-0786 | Fax: 800-524-2853 |
| International | +1-815-397-7070 | Fax: +1-815-397-9247 |

4455 Boeing Drive • Rockford, IL 61109-2988 • USA • 815-397-7070
An ISO 9001 Company • Greenlee Textron Inc. is a subsidiary of Textron Inc.

www.greenlee.com